

DISCMASTER HAULMPULLER



A NEW REVOLUTION IN HAULM DESTRUCTION



- ✓ Very good and accurate operation
- ✓ No exposed potatoes and closed rows
- ✓ Light weight machine and easy to use
- ✓ Low operating costs



VEGNIK

Vegnik BV
Euro 25
8305 BT Emmeloord
The Netherlands

+31 527 23 10 99
info@vegniek.nl
www.vegniek.nl

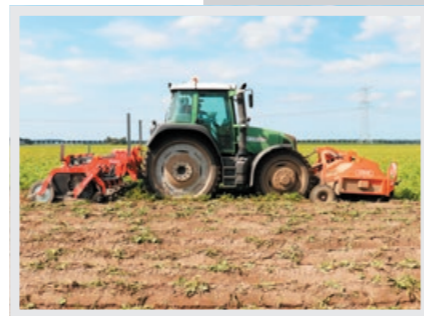


CLOSED ROWS

Via the spring-loaded haulm guides the haulm is brought to the intake drums. The intake drums turn the haulm including a little bit of soil in a narrow row that is directed to the pull discs. Next to the pull discs are stainless steel gliders that prevent potatoes from being pulled out of the row. As soon as the flow of haulm with soil leaves the pull discs it is guided to the diabolo rollers which then gently press the loose ground. The result: Well-covered potatoes and well-closed rows which are resistant against weather influences.

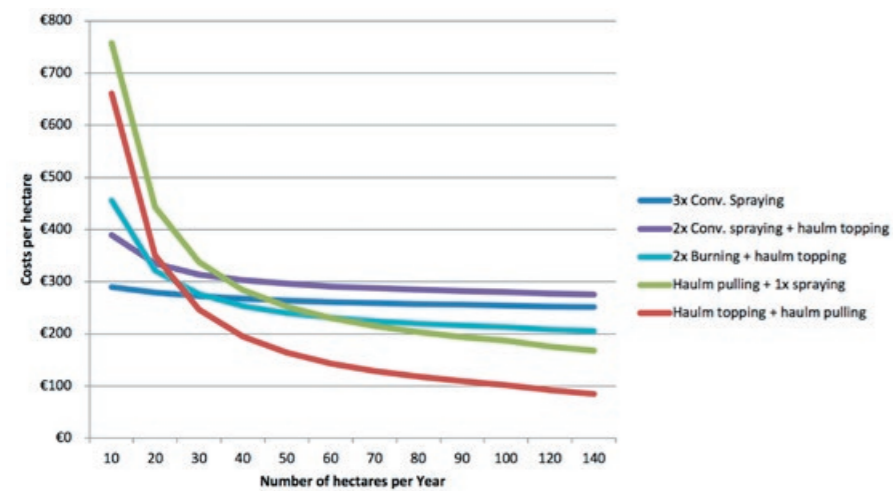
LIGHT WEIGHT MACHINE AND EASY TO USE

The DiscMaster is a strongly built machine but also light in weight and easy to use. The machine is mounted to the tractor's three-point linkage. All elements are independently suspended for perfect tracking of the ground and bumps. The haulm guides are following the rows and can be adjusted in all directions by means of one bolt. The speed of the pull discs is variable adjustable from the cab and the working depth is adjustable via a spindle on the back of the machine.



LOW OPERATING COSTS

By pulling potato haulm, spraying or burning the crop can be avoided at least once or maybe twice. In many cases, spraying is no longer necessary at all. The moment of growth stop is much better to determine, the mother potato dies earlier and the hardening process of the potato goes much faster so that earlier harvesting is possible. Because the DiscMaster requires little maintenance, it's already cheaper than traditional ways on areas of 40 hectares upwards of haulm pulling.



TIP!

SEE HOW THE DISCMASTER 150 WORKS? SCAN THE QR-CODE:



SPECIFICATIONS

Type	DM150	DM300	DM350	DM450
Working width *	2x 75-92 cm	4x 75 cm	4x 75-92 cm	6x 75-92 cm
Transport width	2.0 m	3.0 m	3.5 m	5.2 / 5.9 m
Weight	900 kg	1715 kg	1735 kg	2850 kg
Stroke linkage element	34 cm	34 cm	34 cm	34 cm
Working depth	-5 to +5 cm	-5 to +5 cm	-5 to +5 cm	-5 to +5 cm
Pressure on diabolo roller	0-200 kg	0-200 kg	0-200 kg	0-200 kg
Minimal required hydraulics	180 bar-50 l/min	180 bar-80 l/min	180 bar-80 l/min	180 bar-120 l/min
Plastic diabolo roller	2x	4x	4x	6x
LS hydraulics with control box with;	Option	Standard	Standard	Standard
- Rpm and rotation direction				
- Warning when intake drums are blocked				
Automatic opening of element by reversing discs	Standard	Standard	Standard	Standard
Lifting element by tractor hydraulics	Standard	Standard	Standard	Standard
Electric-hydraulic lifting each element separately or simultaneously	Option	Option	Option	Option
Spring-loaded haulm guides	Standard	Standard	Standard	Standard
Rubber guide plates, to prevent ground falling next to the row	Standard	Standard	Standard	Standard
Marker boards and LED lighting	Standard	Standard	Standard	Standard
Disc coulter for cutting off haulm from the adjacent row	Option	Option	Option	Option
Disc coulter for drainage of wheel tracks	Option	Option	Option	Option
Combined depth and cutting wheel	Option	Option	Option	Option

*Specify row distance when ordering

THE ADVANTAGES

- ✓ No exposed (green) potatoes
- ✓ Perfect covering and pressing of the rows
- ✓ Powerful driving mechanism directly from the tractor hydraulics
- ✓ Simple and effective depth control
- ✓ Potatoes can be harvested earlier
- ✓ Less chance of rhizoctonia infection
- ✓ Potato growth stops immediately



TIP!

SEE HOW THE DISCMASTER 300 WORKS? SCAN THE QR-CODE:

